

GZF3208D

Hybrid Belt-converting UV printer
Print flexible and rigid substrates from a single device



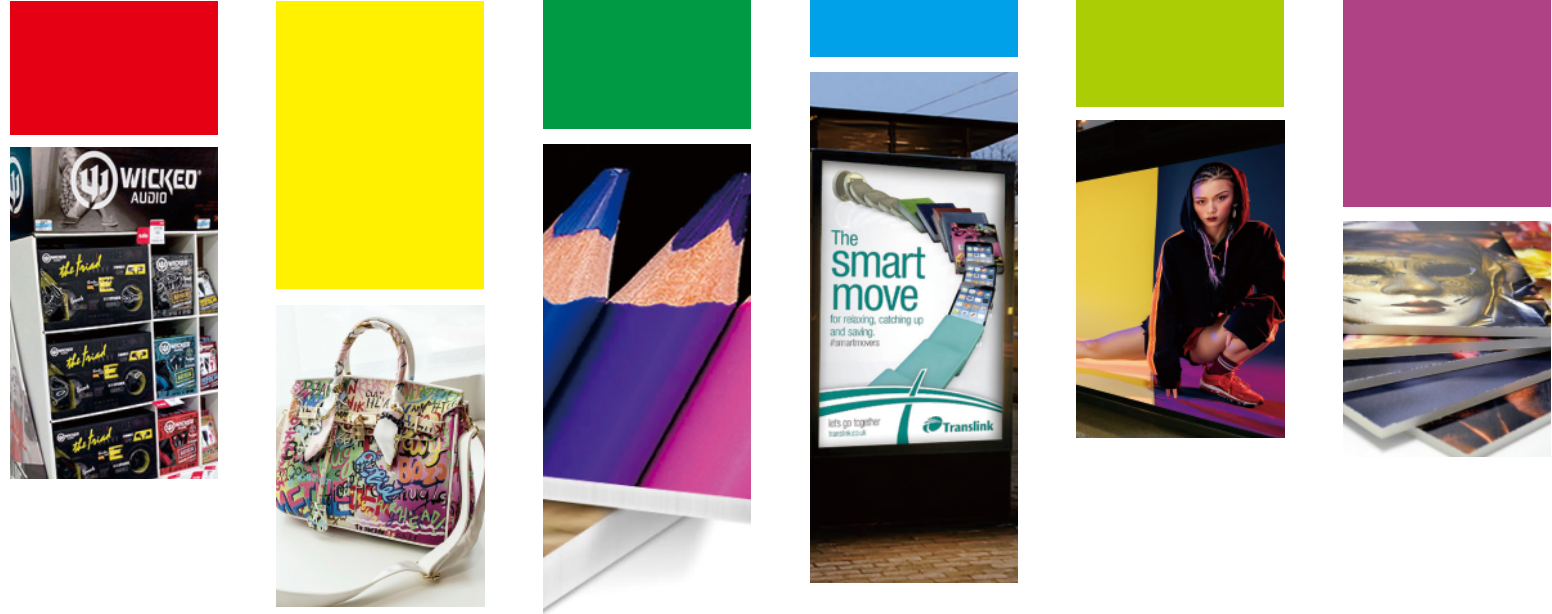
Available with extension table(optional)

What' s New:

- ◆ New designed stronger body structure. Lower printing table for more friendly media handling.
- ◆ Stronger and non-deformable iron beam assures more precise carriage movement.
- ◆ Water cooling platen for temperature sensitive materials.
- ◆ Upgraded feeder delivers more stable performance when RTR application.

Other features:

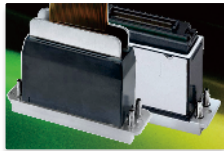
- ◆ Up to 8 Ricoh Gen5/Gen6 heads with 4 levels of grayscale.
- ◆ Dual water cooling LED UV lamps are effective and energy saving.
- ◆ GZ negative pressure system assures stable ink supply and nozzle jetting.
- ◆ White ink stirring and circulation system ensures stable white printing and long white head life.
- ◆ Dual linear guides and 750w AC servo system assure quiet, stable & accurate carriage movement.
- ◆ Media alignment bar enables easy and quick media loading when printing sheet media.
- ◆ High efficient anti-static system eliminates the ink overspray to achieve perfect printing.



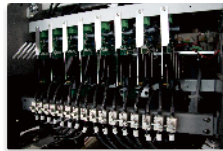
Model	GZF3208D							
Print Head	3~8 Ricoh Gen 5 printheads				3~8 Ricoh Gen 6 printheads			
Resolution	600x600~600x1800 dpi							
Curing System	Dual water cooling LED UV curing lamps							
Ink	UV curable ink							
Color Configuration	1xKCMY; 1xWW+1xKCMY; 1xWW+1xKCMY+1xVV; 2xWW+1xKCMY+2xVV; 2xKCMY; 2xWW+2xKCMY; 3xKCMY; 2xWW+3xKCMY							
Ink Supply System	Negative pressure system (White ink stirring and circulation system)							
Ink Tank	2500ml							
Media Thickness	Max. 50mm							
Media Type	Flexible Media: Ceiling Film, Vinyl, Frontlit, Backlit, Banner, Fabric, Wall paper, Leather, etc. Rigid Media: PVC board, Foam board, Corrugated Paper, Aluminum sheet, Wood, etc							
Printing Width	Max. 3200mm							
Printing Speed	Print Mode	Resolution	1xKCMY	2xKCMY	3xKCMY	1xKCMY	2xKCMY	3xKCMY
	Draft	600*600	34.6m ² /h	61.6m ² /h	82.2m ² /h	37.1m ² /h	66.2m ² /h	87.9m ² /h
	Production	600*900	23.3m ² /h	43.1m ² /h	58.7m ² /h	25m ² /h	46.2m ² /h	62.6m ² /h
	Hi-Res	600*1200	10.9m ² /h	20.8m ² /h	29.3m ² /h	11.8m ² /h	22.4m ² /h	31.6m ² /h
	Photo	600*1800	7.4m ² /h	14.2m ² /h	20.1m ² /h	8m ² /h	15.4m ² /h	21.6m ² /h
Data Interface	External: USB3.0; Internal: Fiber Optical							
Working Environment	Temp.20°C~30°C, Humidity:35%~65%							
Software	FlexiPRINT UV version+GZ control console							
Power	Single-phase, 50/60Hz, AC220V±10%;30A(Printer+Vacuum); 5A(UV controller)							
Installed/Packed Size	LxWxH(mm): 6450x2000x1659/6450x2100x1950(Printer); 650x340x340/ 1230x810x720(Blower& Chiller); 2682x1200x1093/3100x750x1630(Extension table)							
N.W./G.W.	2474kgs/3200kgs(Printer); 108kgs/144kgs(Blower& Chiller); 152kgs/288kgs(Extension table)							

*Specifications are liable to change without prior notice.

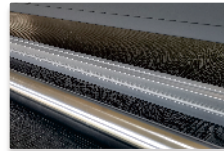
Main Features



Ricoh Gen5/ Gen6 print heads



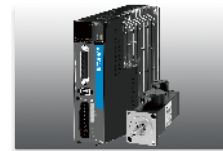
Negative Pressure System



Media alignment bar



Precise belt system



750w AC Servo Motor



LED UV lamps& Static eliminator

Gongzheng Group Co., Ltd.

Add: Miaobei Village, Yongjia County, Wenzhou City, Zhejiang Province, China 325102
 Tel: +86-577-67319778
 Fax: +86-577-67319775
 Email: gzsales@gongzheng.com
 Web: www.gongzheng.com



Authorized distributor:

